



Live and Learn Together
JourneyHouse.ca

Our Vision



- ▶ Journey House imagines a sustainable and inclusionary model of residential living, where each individual experiences an enhanced sense of identity, belonging and self-worth, and authentic connection to community.



About Us



- ▶ Journey House is a Canadian registered charity, which incorporates a supported independent living model, for adults with diagnosed developmental and intellectual exceptionalities.



About Us



- ▶ In March, 2014, Journey House opened its doors, for adults with developmental challenges.
- ▶ Journey House was created, as an outgrowth of day programming, provided by Destiny's Way Support Services.



About Us



- ▶ The purpose of Journey House is to provide a long term residential option that addresses both availability and affordability.



About Us



- ▶ Using a person-centered and relational approach to supporting living, residents are encouraged to become integrated and connected with their community.
- ▶ Through a range of innovative activities, an enhance sense of belonging and personal identity is developed.



How Does It Work?



The Journey House Model:

- ▶ Residents are typically young adults that are able to enjoy their own room and live with 3–4 other individuals in a single home.
- ▶ Each resident has their own unique experience, strengths, and needs, yet share the main goal of using this natural environment to foster growth and opportunity.



How Does It Work?



The Journey House Model:

- ▶ In order to keep the staffing costs and the cost of service, at a reduced rate, a facilitator is selected to live onsite 24hrs/day, in exchange for free room and board.
- ▶ Each facilitator is both a roommate and mentor to their fellow roommates, who in turn develop life skills organically such as: hygiene, cleaning, budgeting, safety, shopping, meal preparation, and more...



How Does It Work?



The Journey House Model:

- ▶ Supports mutuality of responsibility between facilitator and residents.
- ▶ Non-judgment based.
- ▶ Focuses on learning through comprehension of natural consequences.



Why Does It Work?



The Journey House Model:

- ▶ The residence is a home, not a group home or facility.
- ▶ The facilitator is not an expert or instructor but is a helpful trusted roommate who leads by example.
- ▶ The facilitator also helps their roommates develop goals as part of their self directed plans.



What Are Our Challenges?



The Journey House Model:

- ▶ Ensuring our philosophy is followed, by maintaining an environment that allows for a “teaching moment”.
- ▶ Balancing the professional and personal relationship.
- ▶ Preserving respectful relationships between residents
- ▶ Promoting independence while mentoring for a positive outcome.
- ▶ Servicing a diverse group while respecting the person-centered approach.
- ▶ Identifying organizational expectations and boundaries.



What is Included?

- ▶ The Journey House Program includes:
 - Rent, Utilities, Food
 - Safety
 - Overnight supervision
 - Daily guidance
 - Organic “teaching moments”
 - Recreation
 - Organized social events
 - Adult day programming



What is Included?



- ▶ The Journey House Program includes:
 - Home environment as opposed to clinical one
 - Support addressing legal and advocacy needs
 - Support with seeking employment
 - Support with finances and money management
 - Support in seeking additional education or training
 - Addressing health (medical needs and healthy lifestyle choices)
 - Support with activities of daily living (hygiene, shopping, meal prep)
 - Community involvement (volunteer, spiritual and cultural organizations)



What Are the Costs?



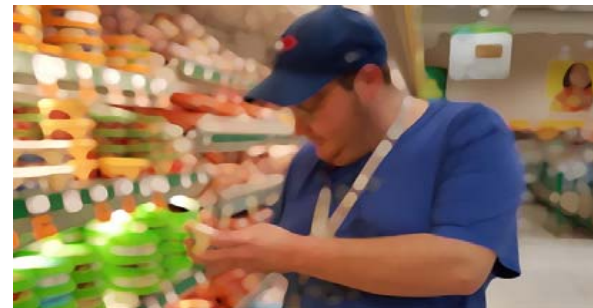
- ▶ Each resident is responsible for their rent and the fee for support services totalling \$1000/month. The maximum funds allocated to an individual by ODSP, covers this cost.



What Are the Costs?



- ▶ At a cost of \$700/month, rent includes all utilities.
- ▶ At a cost of \$300/month, services include pooling of grocery funds to purchase and preparing meals, adult day programming, and overall guidance and support from the mentor.
- ▶ This portion of the residents' costs is subsidized by Journey House fundraising.



Is there a Waiting List?



- ▶ Currently, the waiting list for Journey House is approximately one year from the date of the initial application and intake interview.
- ▶ Recruiting facilitators is the most challenging aspect of the program.
- ▶ Once this goal has been attained, securing a residence is a fairly easy process.



Our Goals



- ▶ Guided by the Board of Directors, Journey House will continue to develop a strategic plan that focuses on:
 - Growth
 - Establishing a pool of facilitators
 - Development of programs
 - Broadening our scope



Board of Directors

- ▶ Horace Roxborough – President
- ▶ Stephen Hazell – Chair
- ▶ Gopal Sharma – Vice Chair
- ▶ Marguerite Black – Secretary
- ▶ Richard Mansell – Treasurer



For More Information:



Contact:

Journey House

200-38 Auriga Drive

Ottawa, ON, K2E 8A5

613-226-6222 ext. 2



JourneyHouse.ca

